

# MBYC Bay Courses

fold chart sheet in half to display monohull and multihull courses separately

## Triangle and Windward - Leeward

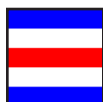
**Course Marks:** Are large ORANGE balls (W & L) or large YELLOW balls (W2 & L2). See table for location of Start and Finish Lines with respect to the course.

**Permanent Marks:** Are numbered yellow cylinders in the approximate locations shown.

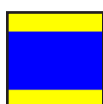
**Flag Marks:** Are international Code of Signals flags. They are set before races depending on the wind. See the descriptions below.



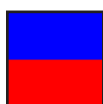
**"A"** - Usually deep in the NW corner of "Chicken" (Santa Barbara) cove.



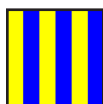
**"C"** - Usually set as a leeward mark for Sabots racing in "Chicken Cove". Blue, Red & White horizontal stripes.



**"D"** - Usually in front of the MBYC Front Dock. Yellow & Blue horizontal stripes.



**"E"** - Set along the east shore of Santa Clara Point. Blue & Red horizontal stripes.



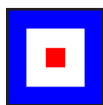
**"G"** - Set only on north or south wind days. Located in the channel of the west shore of Vacation Isle. Blue & Yellow vertical stripes.



**"T"** - Used as a turning mark when finishing to weather. On weekends, usually located to leeward of the Tower building. An ORANGE ball may be substituted. For TNT's, located to leeward of the MBYC Bar.



**"Orange"** - Orange flags mark the Start and Finish Lines. Read the Sailing Instructions on the other side for more details.



**"W"** - Set as the 1st weather mark for most Bay Courses. An ORANGE ball may be substituted.

Note that Mark "T" is always taken to Starboard for these courses. All other marks to Port.

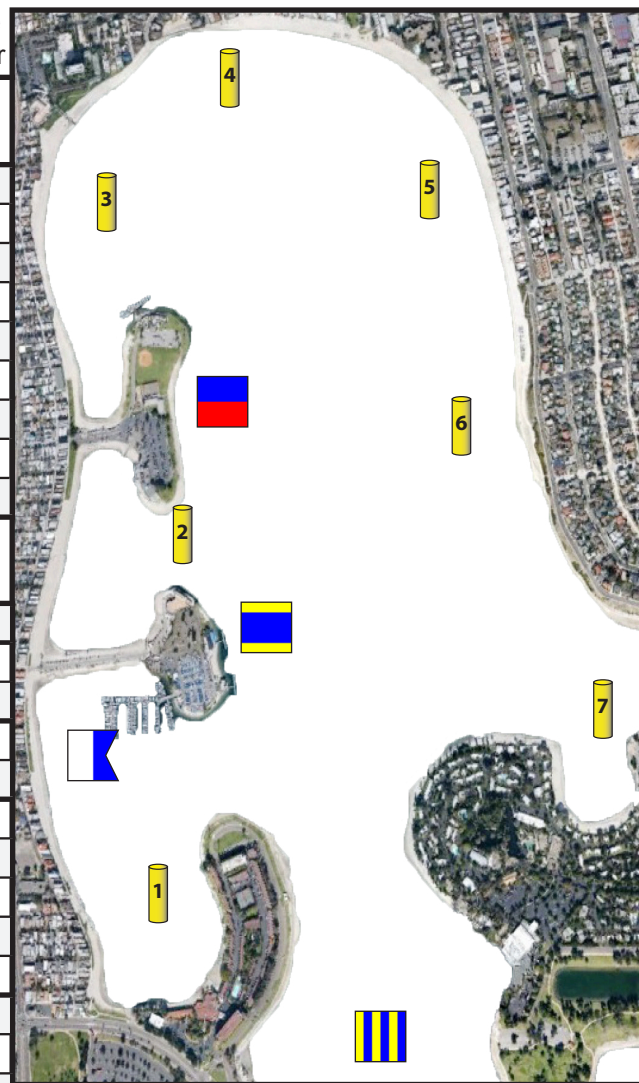
Wind Dir. Course Number Progression of Marks: Monohull Course Multihull Course Course Number

## "S" "F" Triangle & Windward - Leeward Courses

M	M	1	S-(W-L)-F	S-W-(W2-L2)-F	1
M	M	2	S-(W-R-L)-F	S-(W2-L2)-F	2
M	M	3	S-W-R-L-(W-L)-F	n/a	3
L	W	4	S-(W-L)-F	S-W-(W2-L2)-F	4
L	W	5	S-(W-R-L)-F	S-(W2-L2)-F	5
L	W	6	S-W-R-L-(W-L)-F	n/a	6
L	L	7	S-W-F	n/a	7
L	L	8	S-W-(L-W)-F	S-W-(W2-L2)-W2-F	8
L	L	9	S-W-R-(L-W)-F	S-(W2-L2)-W2-F	9

## Flag & Buoy Race Courses

Any	11	S-W-Ts-F	S-W-Ts-F	11
N	13	S-W-(G-5)-Ts-F	S-W-(G-4)-Ts-F	13
	15	S-W-(G-5)-3 Ts-F	n/a	15
NNW	17	S-W-(G-4)-Ts-F	S-W-(G-5)-Ts-F	17
	19	S-W-(G-4)-3-Ts-F	S-W-(G-5)-Ts-F	19
NW	21	S-W-(6-4)-Ts-F	S-W-(7-3)-Ts-F	21
	23	S-W-(6-4)-3-Ts-F	S-W-(7-3)-Ts-F	23
	25	S-W-(5-4)-Ts-F	S-W-(7-3)-Ts-F	25
	27	S-W-(5-4)-3-Ts-F	S-W-(7-3)-Ts-F	27
WNW	29	S-W-(6-3)-Ts-F	S-W-(7-E)-Ts-F	29
	31	S-W-(6-4)-Ts-F	S-W-(7-3)-Ts-F	31
W	35	S-W-(6-3)-Ts-F	S-W-(7-E)-Ts-F	35
	39	S-W-(6-E)-Ts-F	S-W-(7-D)-Ts-F	39
	41	S-W-(6-E)-Ts-F	S-W-(7-2)-Ts-F	41
	43	S-W-(6-E)-Ts-F	S-W-(7-2)-Ts-F	43
WSW	45	S-W-6-3-(5-3)-Ts-F	S-W-6-E-(7-2)-Ts-F	45
	51	S-W-(5-E)-Ts-F	S-W-(6-2)-Ts-F	51
SW	61	S-W-(5-E)-Ts-F	S-W-(6-2)-Ts-F	61
	63	S-W-(5-2)-Ts-F	S-W-(6-D)-Ts-F	63
	65	S-W-(5-E)-Ts-F	S-W-(6-D)-Ts-F	65
SSW	71	S-W-(5-D)-Ts-F	S-W-(6-G)-Ts-F	71
S	81	S-W-(4-G)-Ts-F	S-W-(5-G)-Ts-F	81



## Special Area Restrictions:

Boats sailing Multihull courses #1, #4 or #8 must observe additional area restriction rules. Following the start of each race, these boats are restricted from re-entering the area behind (leeward of) the starting line for 100 feet and the triangle area in front (windward) of the starting line up to the leeward (L) mark. An exception to this rule applies for course #8 when the boats are approaching the leeward finish line.

**Courtesy.** All racers should be mindful and courteous to other aquatic users of Mission Bay Park.

Revision 05.2018

# Mission Bay Yacht Club - Bay Course Chart and Sailing Instructions

## 1. Rules

1.1 These Regattas shall be governed by the RULES as defined in the latest Racing Rules of Sailing (RSS).

1.2 These Regattas are designated Category C.

1.3 RRS changed by these Sailing Instructions are: Race Signal, 26, 27.1, 33, 35, A2

## 2. Entries

2.1 Competitors must be members of a recognized MBYC Fleet, be a guest of a recognized MBYC Fleet, or have permission of the Race Committee to participate. Non-MBYC Members must sign in the Guest Book at the MBYC Front Desk before starting.

2.2 Eligible boats must be entered by legibly filling in the appropriate information on the correct Fleet form posted on the bulletin board. Unregistered or illegible entrants will not have their finish positions scored.

2.3 Three (3) entries are the minimum required to guarantee a separate start. However, the Race Committee may combine Fleets as it desires in order to avoid needless delays.

## 3. Notices to Competitors

3.1 Notices to Competitors will be posted on the bulletin board on the outside south wall of the main club house.

3.2 Verbal changes to these SI may be made on the water.

**4. Changes in the Sailing Instructions** will be posted not less than 1 hour before the scheduled first start of the day.

## 5. Signals made Ashore

5.1 Signals made ashore shall be made from the Club Porch flagpole.

5.2 Flag "AP" when displayed ashore means: "Boats shall not leave the club docks until this signal is lowered. The warning signal will be made not less than 15 minutes after this signal is lowered." This changes RRS "Race Signal."

## 6. Schedule of Races, Lunch Rotation

6.1 Weekend Races: The schedule and format of races shall be published in the MBYC *MAINSTAY*. The warning for weekend first starts will be at noon.

6.2 TNT Races: The schedule and format of races shall be published in the MBYC *MAINSTAY*. The warning for TNT first starts will be at 5:57.

6.3 The Race Committee may rotate fleets in for lunch. Fleets not desiring a break should notify the day's PRO. The length of the lunch break is wholly at the discretion of the day's PRO.

## 7. Class Flags

7.1 Class Flags will be colored flags with class insignia on them or class defined flags. Handicap keel boats shall have a flag with the letters HCK; handicap dinghy shall have a flag with the HCD on it.

7.2 If unexpected classes are to be started, the Race Committee may verbally designate a flag for them.

**8. Racing Area** will be in the Sail Bay portion of Mission Bay, including attached coves.

**9. Marks** are described on the other side of this form.

## 10. The Course

10.1 The Courses are described on the other side of this form.

10.2 The course shall be displayed with or immediately after the warning signal. This changes RRS 27.1.

10.3 When a roman numeral is displayed, it indicates that the portion of the course in parentheses will be sailed the indicated number of times. If no roman numeral is displayed, the portion of the course within the parentheses shall be sailed only once.

## 11. The Start

11.1 Races will be started using Rule 26 modified so that the warning signal will be 3 minutes prior to, and the preparatory signal 2 minutes prior to, the start. This changes RRS 26.

11.2 For sequential starts, the starting signal shall be the warning signal for the following fleet(s) with the class flag going up as quickly as possible. This changes RRS 26.

11.3 The starting order for a day's 1st race will be posted. The starting signal for fleets not present will be skipped.

11.4 The starting line will be between the staff displaying an orange flag on the signal boat and an orange flag on the port end.

11.5 The start line is restricted unless your class flag is up for starting. This applies to all classes of boats.

**12. Change of Course** Due to the proximity of marks in the Bay, marks may be moved to more properly align them with the wind without notification, provided that no boat has started the leg leading to the moved mark. This changes RRS 33.

## 13. The Finish

13.1 Non-TNT Races, afloat finish (Courses 1 through 9): The Finish Line shall be between a staff displaying an orange flag on the RC Boat and a similar staff floating to port, also with an orange flag.

13.2 Non-TNT Races, Tower finish (Courses 11 through 81): The Finish Line shall be between 2 staffs on buoys, each displaying an orange flag, that are positioned on a line that intersects the MBYC Tower Building.

13.3 TNT Races (All TNT courses): The Finish Line shall be between a staff displaying an orange flag on the RC Boat and a similar staff floating to port, also with an orange flag, both in the general vicinity of the MBYC Bar.

## 14. Time Limit

14.1 The time limit to start shall be 2 minutes after the starting signal. This changes RRS 35.

14.2 The time limit to finish shall be 1.5 hours for each class. Boats failing to finish within 30 minutes of the first boat in their class will be scored DNF. This changes RRS 35.

**15. Protests** shall be written on US Sailing forms available from the Club Office. Protests must be delivered to the office within 1 hour of the finish of the last boat of the Fleet in question.

**16. MH Alternate Penalty:** For multihulls RRS 44.1 and 44.2 are changed to a One Turn Penalty that includes one tack and one jibe.

**17. Scoring** The low point scoring system of the Rules shall be used, modified so that each boat's score will be the total of her race scores. One race shall be completed to constitute a regatta. The number of races in a series is indicated in the *MAINSTAY*. This modifies RRS A2.

## 18. Prizes

17.1 Non-series races, including TNT: Up to 5 prizes will be awarded in each recognized MBYC Fleet; one prize for every 3 boats who finish.